

TB970_M16_Leather Imitation Pocket Tee

| | Description | | S | M |
|---|-------------------------------------|----|------|------|
| A | Length | cm | 70 | 72 |
| B | 1/2 Chest Width | cm | 47.5 | 50 |
| C | 1/2 Hem Width | cm | 47.5 | 50 |
| D | 1/2 Shoulder Width | cm | 41.5 | 44 |
| E | Sleeve Length (top) | cm | 19.5 | 20 |
| F | Sleeve Length (down) | cm | 10 | 10.5 |
| G | 1/2 Cuff Width | cm | 15 | 16 |
| H | 1/2 Armhole Straight (seam to seam) | cm | 21 | 22 |
| I | 1/2 Upper Arm Width | cm | 20 | 21 |
| J | Neckhole (seam to seam) | cm | 21 | 22 |
| K | Front Neckdrop (HPS to seam) | cm | 10 | 10.5 |
| L | Back Neckdrop (HPS to seam) | cm | 2 | 2 |
| M | Hem Height | cm | 2.5 | 2.5 |
| N | Neckcuff Height | cm | 1 | 1 |
| O | Pocket Distance from HSP | cm | 20.5 | 21 |
| P | Pocket Distance from seam (top) | cm | 4.5 | 5 |
| Q | Pocket Distance from seam (bottom) | cm | 8.5 | 9 |
| | Pocket Height (center) | cm | 11 | 11.5 |
| R | Pocket Height (sides) | cm | 9.5 | 10 |
| S | Pocket Width | cm | 9.5 | 10 |

Comments

Fitting

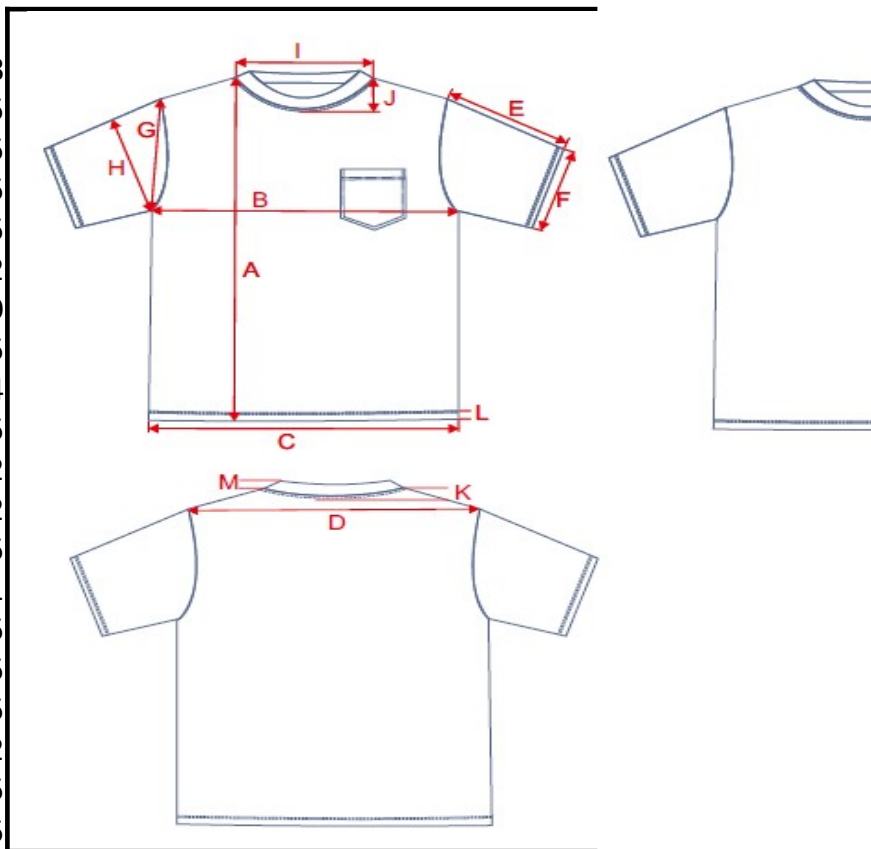
Article Description

Fabric

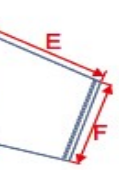
Colors

| |
|----------------------------|
| Regular Fit |
| |
| 100% Cotton, Leather Imit. |
| White/Black, Black/Black |

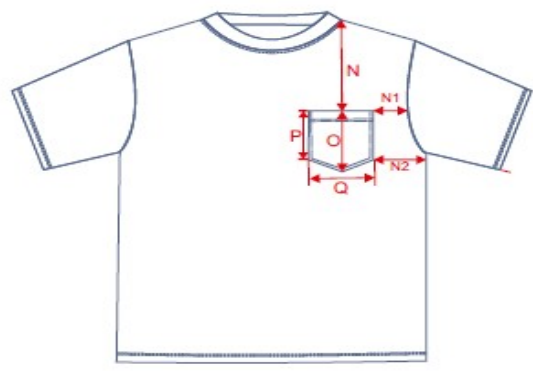
| L | XL | XXL | |
|------|------|------|--|
| 74 | 76 | 78 | |
| 52.5 | 55 | 57.5 | |
| 52.5 | 55 | 57.5 | |
| 46.5 | 49 | 51.5 | |
| 20.5 | 21 | 21.5 | |
| 11 | 11.5 | 12 | |
| 17 | 18 | 19 | |
| 23 | 24 | 25 | |
| 22 | 23 | 24 | |
| 23 | 24 | 25 | |
| 11 | 11.5 | 12 | |
| 2 | 2 | 2 | |
| 2.5 | 2.5 | 2.5 | |
| 1 | 1 | 1 | |
| 21.5 | 22 | 22.5 | |
| 5.5 | 6 | 6.5 | |
| 9.5 | 10 | 10.5 | |
| 11.5 | 12 | 12 | |
| 10 | 10.5 | 10.5 | |
| 10 | 10.5 | 10.5 | |



ation: 55% Viscose 45% Polyurethane



=L



| |
|--|
| |
| |
| |
| |
| |
| |