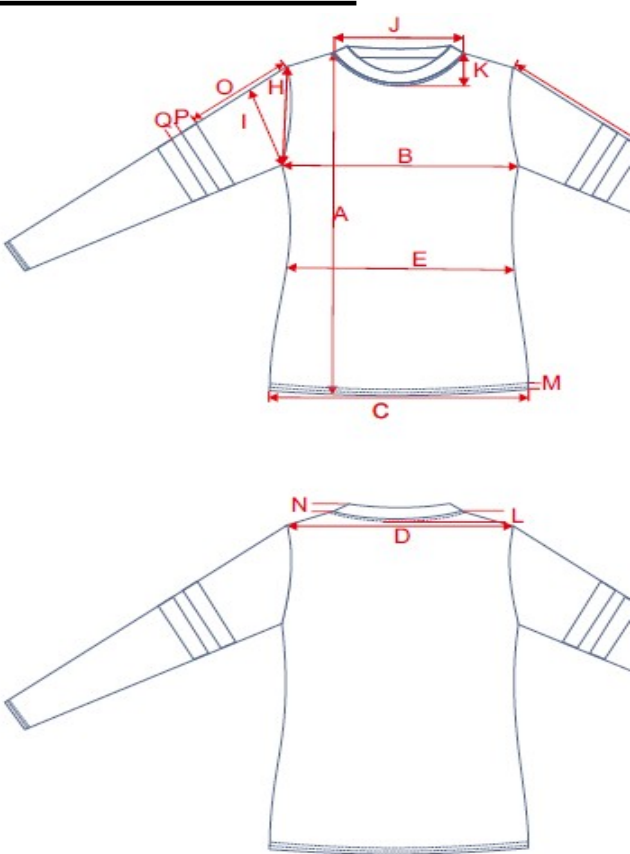


TB789 (no.059) Ladies Terry Melange Crew

	Description		XS
A	Length (inkl. cuff)	cm	67
B	1/2 Chest Width	cm	42.5
C	1/2 Hem Width	cm	44.5
D	1/2 Shoulder Width	cm	39
E	1/2 Waist Width (15 cm under the chest)	cm	40.5
F	Sleeve Length	cm	57
G	1/2 Cuff Width	cm	9
H	1/2 Armhole Straight (seam to seam)	cm	20
I	1/2 Upper Arm Width	cm	16.5
J	Neckhole (seam to seam)	cm	20
K	Front Neckdrop (HPS to seam)	cm	8.5
L	Back Neckdrop (HPS to seam)	cm	2
M	Hem Cuff Height	cm	2.5
M2	Sleeve Cuff Height	cm	2.5
N	Neck Cuff Height	cm	1.2
O	Distance stripe-application down from shoulder	cm	16
P	Stripe Width	cm	3.5
Q	Distance between the stripes	cm	2
R		cm	
S		cm	
Comments			
Fitting			Regular Fit
Article Description			Ladies Crewn
Fabric			23,5% cotton
Colors			Black/Grey/Bl

S	M	L	XL
69	71	73	75
45	47.5	50	52.5
47	49.5	52	54.5
41.5	44	46.5	49
43	45.5	48	50.5
58	59	60	61
9.5	9.5	10	10
21	22	23	24
17.5	18.5	19.5	20.5
21	22	23	24
9	9.5	10	10.5
2	2	2	2
2.5	2.5	2.5	2.5
2.5	2.5	2.5	2.5
1.2	1.2	1.2	1.2
17	17	18	18
3.5	3.5	3.5	3.5
2	2	2	2



neck, Set-In, stripe-applications at the sleeves

/76,5% polyester, unbrushed Fleece, ca. 230 gsm (MA 90120 13#)

Black, Black/Grey/White

URBAN CLASSICS

